

Model PMC

Car, Building Purpose Pressure Transducer

HNHT 深圳华南恒泰
www.HNHTSZ.com
进口传感器供应商

Description

PMC sensing element has excellent temperature properties by adopting a self temperature compensation foil strain gauge. The size is small and price is low for vehicles and heavy machinery use. In addition, a diaphragm and a pressure port are welded together for the prevention of leakage. It is also durable to an instant over pressure and builds an inner amplifier to interface with various kinds of controllers.

Features

- ▶ Built-in amplifier Circuit(VDC, mA)
- ▶ Measuring range 0~50MPa
- ▶ 0.8%FS accuracy
- ▶ IP55 protection(Cable type)
- ▶ Self temperature compensation foil strain gauge
- ▶ Stainless steel media-wetted materials

Applications

- ▶ Off road equipment
- ▶ Hydraulics & Pneumatic
- ▶ Compressor control
- ▶ Industrial engines
- ▶ Pump pressure control

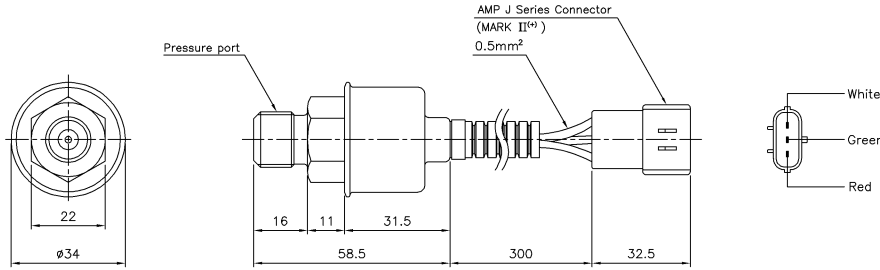
Specifications



Range	0~1, 2, 3, 5, 10, 20, 30, 35, 50MPa (Gauge) -0.1~1, 2, 3, 5, 10, 20, 30, 35, 50MPa (Gauge)
Performance	
Accuracy	±0.8%FS(RSS)
Thermal Effect on Zero	±0.08%FS/°C
Thermal Effect on Span	±0.08%FS/°C
Compensated Temperature Range	-20 ~ 80°C
Operating Temperature Range	-30 ~ 100°C (Optional -30~120°C)
Electrical	
Excitation	11 ~ 28VDC
Output	1~5VDC, 4~20mA(2Wire)
Electrical Connection	Connector, Cable, AMP Connector(1~5VDC 3Wire Only), Head, Din Connector
Physical	
Proof Pressure	150%FS Max.
Burst Pressure	200%FS Min.
Vibration	49.1m/s ² {5G}, 10~500Hz
Shock	490m/s ² {50G}
Pressure port	R(PT)1/8", G(PF)1/8", R(PT)1/4", G(PF)1/4", R(PT)3/8", G(PF)3/8"
Media-Wetted Materials	Stainless Steel 304, 630
Weight	Approx. 130g (AMP Connector Type)

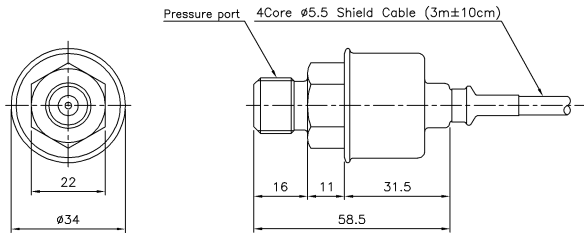
Dimension

▶ AMP Connector Type



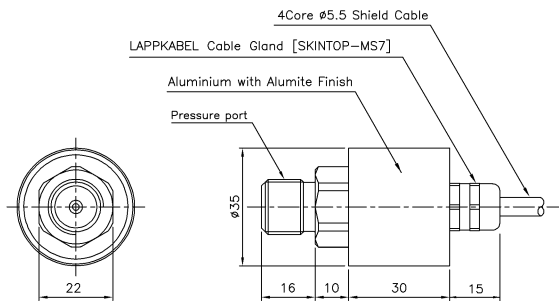
Wire Color	Connections
Red	Input ⊕
White	Common ⊖
Green	Output ⊕

▶ Cable Type



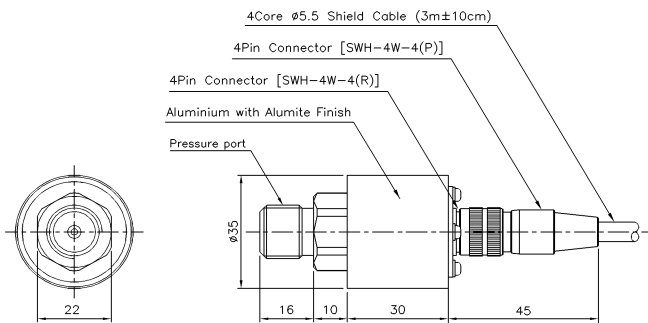
Wire Color	Connections		
	4Wire	3Wire	2Wire
Red	Input ⊕	Input ⊕	Input ⊕
White	Output ⊖	Common ⊖	×
Black	Input ⊖	×	Output ⊕
Green	Output ⊕	Output ⊕	×
Shield	Earth	Earth	Earth

▶ Cable Gland Type



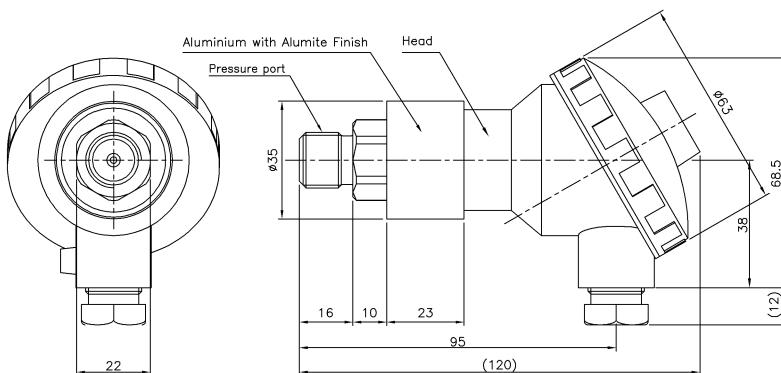
Wire Color	Connections		
	4Wire	3Wire	2Wire
Red	Input ⊕	Input ⊕	Input ⊕
White	Output ⊖	Common ⊖	×
Black	Input ⊖	×	Output ⊕
Green	Output ⊕	Output ⊕	×
Shield	Earth	Earth	Earth

▶ Connector Type



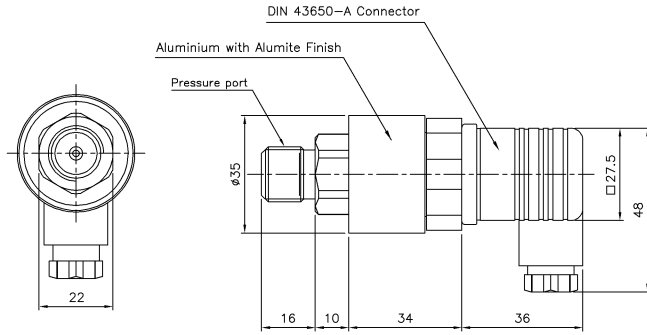
Pin No.	Wire Color	Connections		
		4Wire	3Wire	2Wire
1	Red	Input ⊕	Input ⊕	Input ⊕
2	White	Output ⊖	Common ⊖	×
3	Black	Input ⊖	×	Output ⊕
4	Green	Output ⊕	Output ⊕	×
5	Shield	Earth	Earth	Earth

▶ Head Type



No.	Connections
	2Wire
+	Input ⊕
⊕	Earth
-	Output ⊕

► Din connector Type

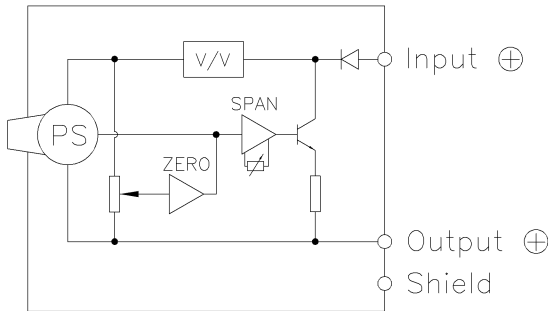


HNHT 深圳华南恒泰
www.HNHTSZ.com
进口传感器供应商

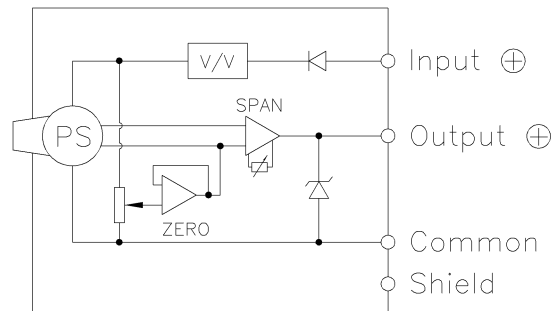
Pin No.	Connections	
	3Wire	2Wire
1	Input ⊕	Input ⊕
2	Common ⊖	Output ⊕
3	Output ⊕	×
⊕	Earth	Earth

Internal Circuit Diagram

► 2Wire mA Output Type



► 3, 4Wire VDC Output Type



Ordering Information

PM C E 0001 M A P A

<p>Model Name</p>	<p>Option</p> <p>A : Normal B : Temperature Range -30~120°C</p>
<p>Output</p> <p>D : 4Wire 1~5V E : 3Wire 1~5V H : 2Wire 4~20mA</p>	<p>Connecting Methods</p> <p>P : Connector C : Cable F : AMP Connector H : Head I : Din 43650-A connector S : Cable Gland</p>
<p>Pressure Range</p> <p>XXXX : Pressure CXXX : Compound Pressure</p>	<p>Pressure port</p> <p>A : R(PT)3/8" D : G(PF)1/4" B : G(PF)3/8" G : R(PT)1/8" C : R(PT)1/4" H : G(PF)1/8"</p>
	<p>Pressure Unit</p> <p>M : MPa B : bar K : kgf/cm² P : psi</p>